

PRODUCT SPECIFICATIONS

PRODUCT:	CHEESE	
CONDITION:	FRESH, SHREDDED OR CUBED	
SIZE:	VARIES	mm (in)
BULK DENSITY:	640 (40)	kg/m ³ (lb/ft ³)
CAPACITY:	5,444 (12,000)	kg/hr (lb/hr)

SHAKER SPECIFICATIONS

CONSTRUCTION	
BED:	SMOOTH SS
FRAME:	SS
SUPPORTS:	SS
BED MASS:	173 (381) kg (lbs)
FRAME MASS:	424 (935) kg (lbs)
DESIGN SPEED:	904 RPM
DESIGN STROKE:	6.5 1/16
MAX STROKE:	7 1/16
(STROKE PER STROKE INDICATOR)	

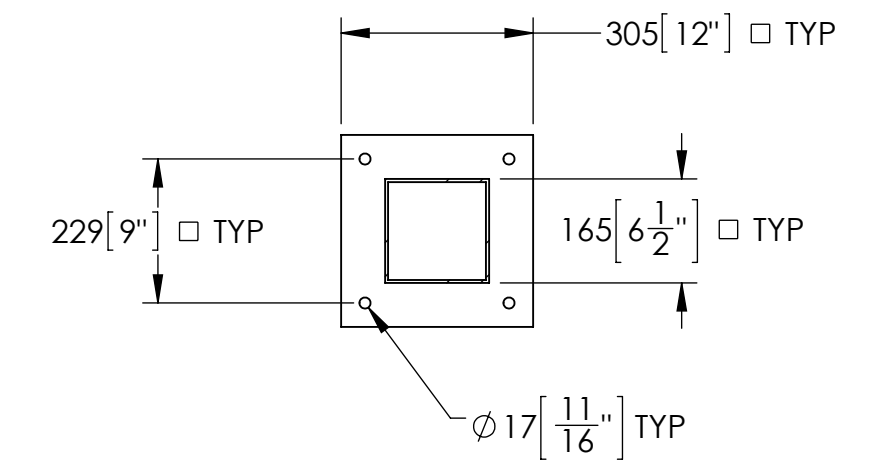
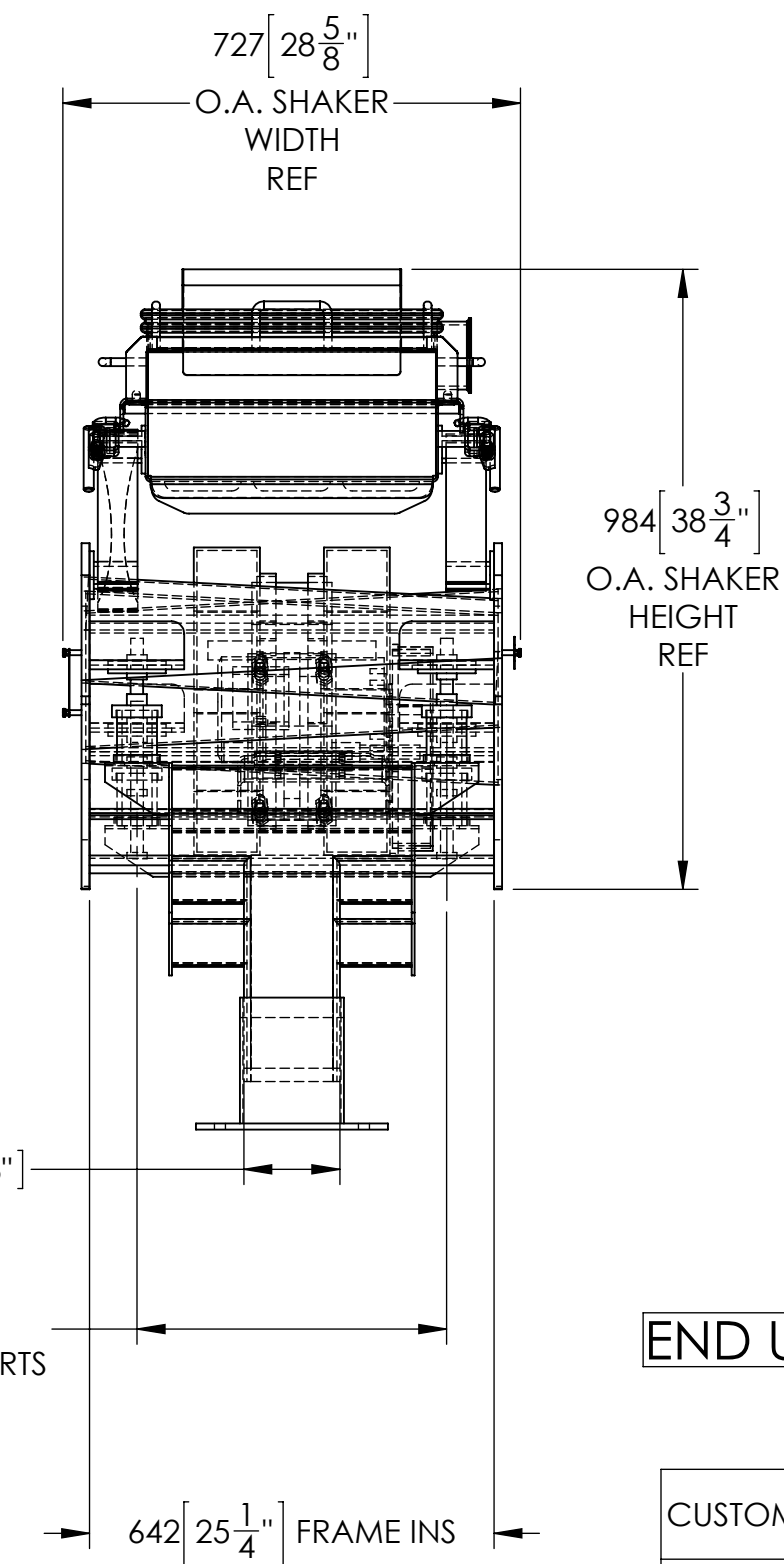
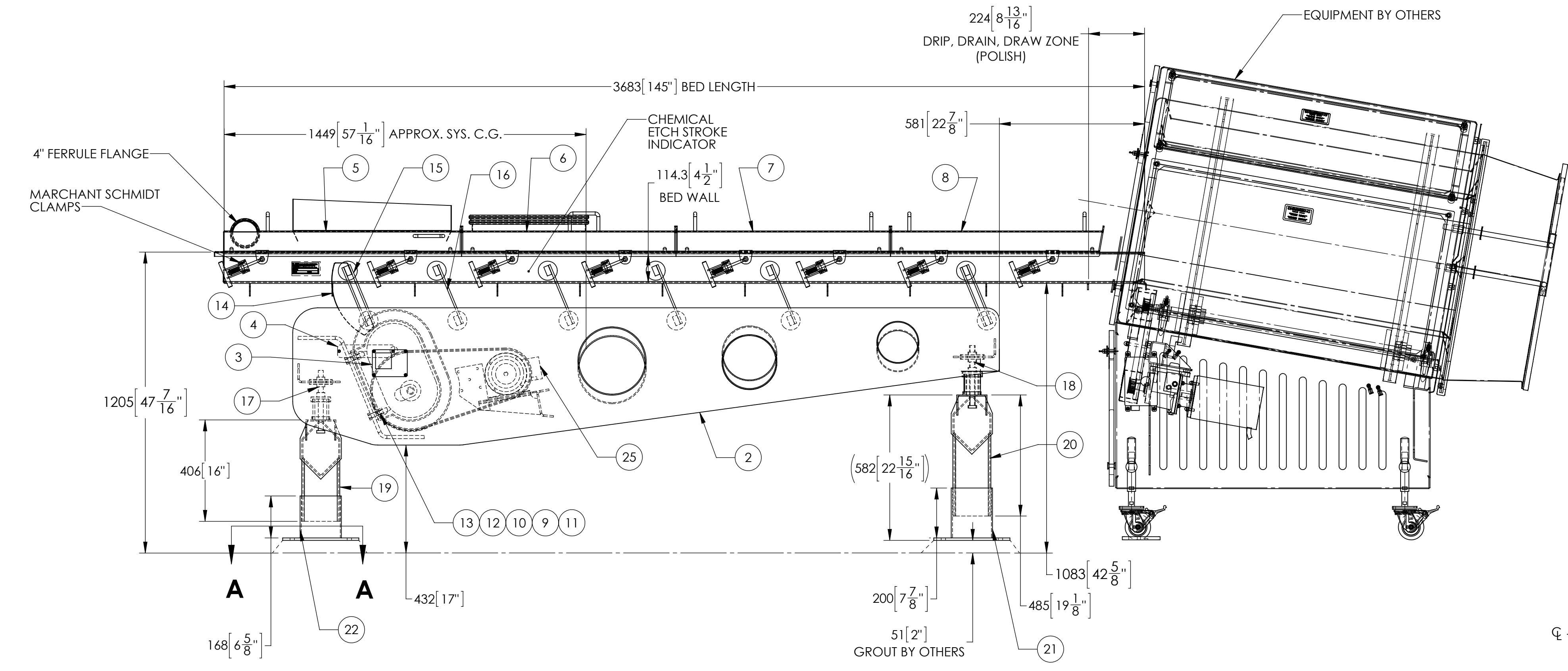
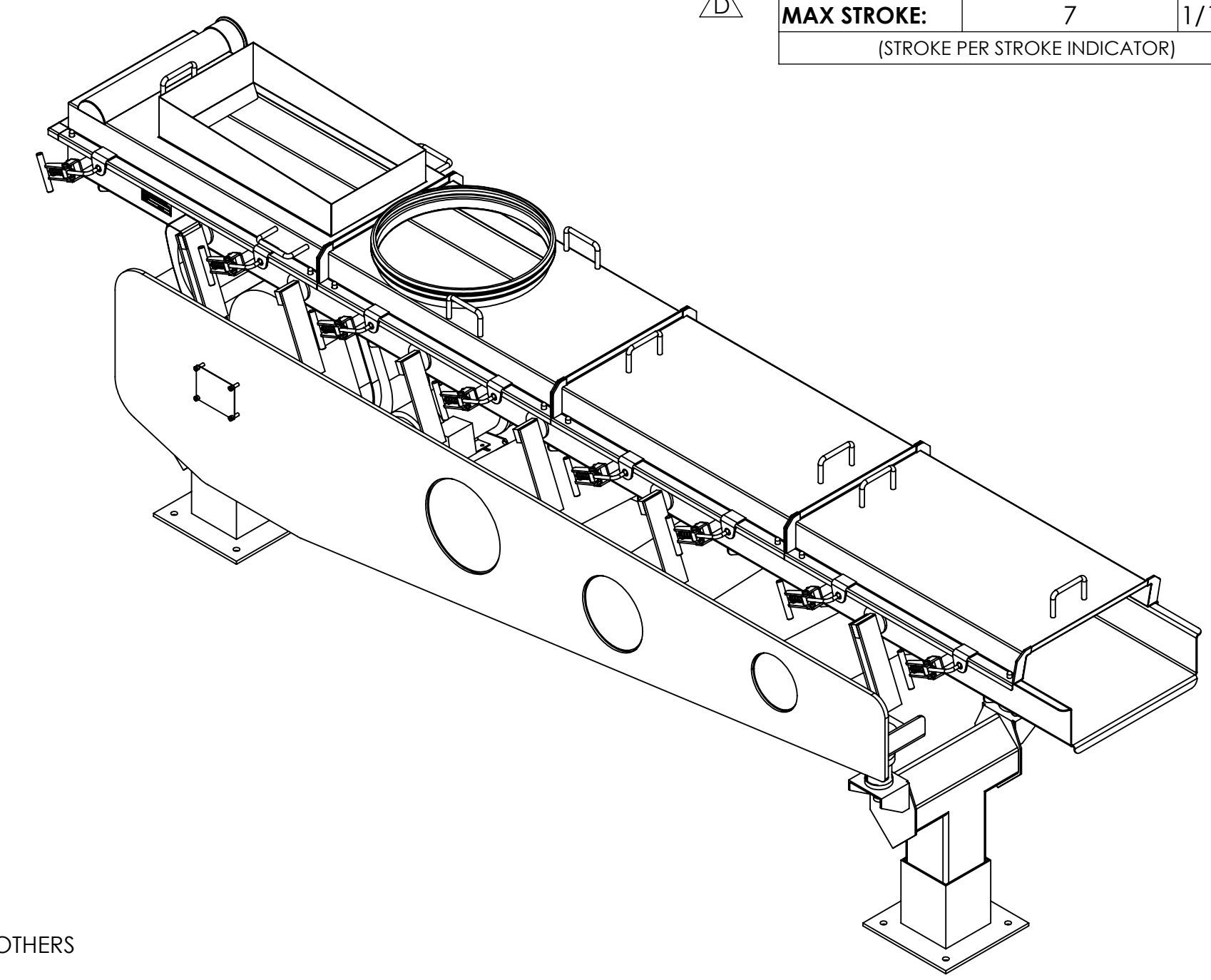
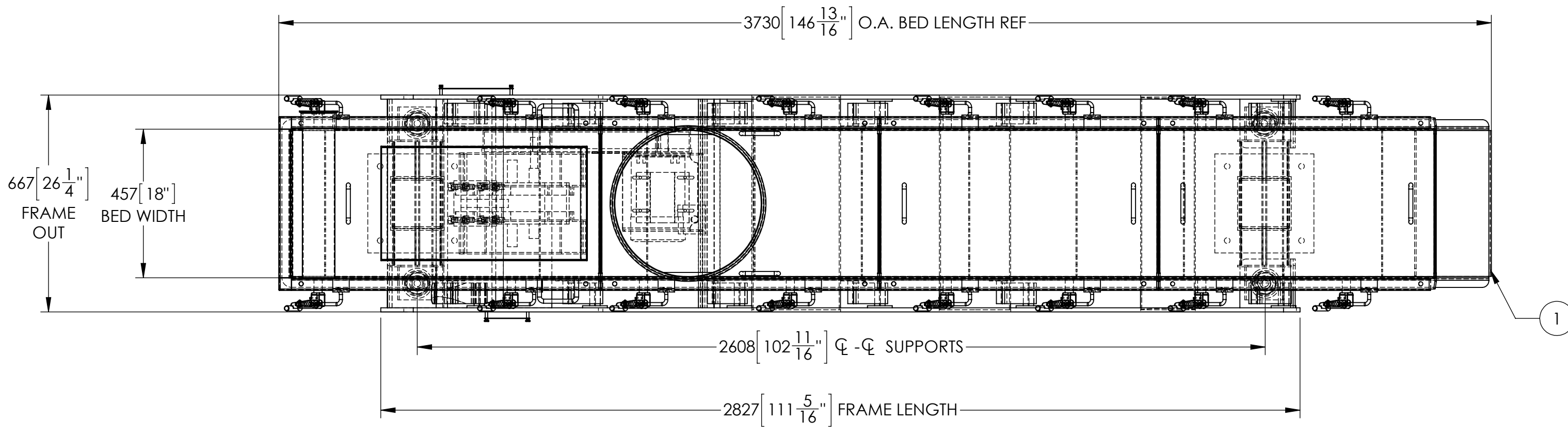
DYNAMIC LOADS

	SHUT DOWN (kg [lb]) @ APPROX 300RPM		RUNNING (kg [lb])	
	VERT	HORZ	VERT	HORZ
INF RIGHT <1>	76 [167]	76 [167]	4.8 [10.6]	11.7 [26]
INF LEFT <2>	76 [167]	76 [167]	4.8 [10.6]	11.7 [26]
DISCH RIGHT <3>	39 [87]	39 [87]	2.5 [5.5]	6.1 [13.4]
DISCH LEFT <4>	39 [87]	39 [87]	2.5 [5.5]	6.1 [13.4]

STATIC LOADS

LOCATION	1	2	3	4
(VERT kg [lb])	189 [417]	174 [384]	122 [269]	112 [248]

- LOADS SHOWN PER ISOLATOR
- LOAD CONDITION IS AT TOP OF SUPPORT
- TOTAL LOAD IS THE SUM OF THE STATIC AND DYNAMIC LOADS
- CUSTOMER MUST VERIFY THAT DYNAMIC LOADS APPLIED AT A FREQUENCY EQUAL TO THE SHAKER DESIGN SPEED DO NOT COINCIDE WITH THE FLOOR, DECK, OR CEILING STRUCTURAL NATURAL FREQUENCY. FAILURE TO DO SO CAN RESULT IN A RESONANCE CONDITION THAT MAY CAUSE UNACCEPTABLE VIBRATION.



END USER: DAIRY PARTNERS-UK

PARTS LIST ON SHEET 2

CUSTOMER	MARCHANT SCHMIDT, INC. / FOND DU LAC , WI		CUST. PO#	0074299-00
SERIAL#	W1015526-005326	ITEM 0 QTY 0	SALES ORDER#	S1008998 SUPERVISOR D. MINTEER
GENERAL TOLERANCES UNLESS OTHERWISE SPECIFIED		DRAWING TO BE INTERPRETED PER ASME Y14.5		
X: ±2 X.X: ±1.5 X.XX: ±1.00 X.XXX: ±0.250 ANGLES: ±1°		HANDLING: VIBRATORY ---		
DESIGNER	MOPP	2015-08-04	PRODUCTION RELEASE	MASS: 673.69kg UNITS: mm/kg
DRAFTER	L&T	2015-08-27	DESIGNER	STATUS: RELEASED
MODIFIED	DMINTEER	2015-10-13	ITEM NUMBER: SH01-006286 REF MODEL: -SH01-005316	
CHECKED	DMINTEER	2015-10-13	CUSTOMER APPROVAL	
APPROVED	DMINTEER	2015-10-13	REV: D	
REV.	DESCRIPTION			
	REVISIONS			

NOTES

- DUAL DIMENSIONS IN BRACKETS [] ARE IN INCHES
- FINISHING GUIDELINES: ENHANCED SANITARY DESIGN & MANUFACTURE (BY KEY)
- INSTALLATION INSTRUCTIONS:
 - NO RIGID CONNECTIONS WITH BED, FRAME, OR ANY SHAKER COMPONENT ALLOWED
 - CLEARANCES: 38 [1-1/2"] MINIMUM CLEARANCE MUST BE MAINTAINED BETWEEN MATING EQUIPMENT
 - COLUMN BASEPLATE; REF DWG 415188 FOR COLUMN BASEPLATE ANCHOR REQUIREMENTS
- ADJUSTABLE PEDESTAL "SLIP JOINTS" ARE NOT RATED FOR LOAD CAPACITY UNTIL WELDED AFTER ADJUSTMENT. DO NOT PLACE WEIGHT OF MACHINE ON SUPPORT UNTIL SLIP JOINTS HAVE BEEN WELDED ALL AROUND WITH A 5 [3/16"] FILLET. FAILURE TO DO SO MAY RESULT IN PERSONAL INJURY AND EQUIPMENT LOSS.

NOTE: DRIVE FASTENERS ARE 17-4 S.S.

MARCHANT WO#: 35454-008

D	AS-BUILT, CHANGED 2 AXES PER SIDE FROM DBL TO SGL, RPM WAS 912, STROKE WAS 6.0, RPM PACKAGE WAS 428475.13
C	PRODUCTION RELEASE
B	ADJUST BED LENGTH, 1ST HOOD CLAMP, AND HOOD DIMENSIONS
A	CUSTOMER APPROVAL
REV.	DESCRIPTION
	REVISIONS

RECOMMENDED SPARES		
QTY.	ITEM#	DESCRIPTION
16	020338	ARM SPRG 10' DRILLED/SC
64	400709.4	SHIM PHENOLIC
2	020898	SPRING ISO ALC 97 WHITE
2	020896	SPRING ISO ALC 95 RED
1	010704	KIT RPR F/ISO-DRIVE (LARGE)

POS	QTY	DOC NUMBER	ITEM	DESCRIPTION
1	1	SH01-006286B	--	BED WELDMENT
2	1	SH01-006286F	--	FRAME WELDMENT
3	1	--	1072844.1	KIT PLATE PRODUCT GENERIC MDL/SERIAL/MFG ORIGIN
4	1	--	1109192	KIT PLATE PICTOGRAM WARN/LKO DE-EN S
5	1	SH01-006286H1	--	HOOD 1 WELDMENT
6	1	SH01-006286H2	--	HOOD 2 WELDMENT
7	1	SH01-006286H3	--	HOOD 3 WELDMENT
8	1	SH01-006286H4	--	HOOD 4 WELDMENT
9	1	--	021995	DR ISO LARGE RH SS
10	1	425475	425475.2	GUARD ASSY LG PLASTIC ISO-DRV "A" SERIES
11	1	406643	406643.1	GUARD ISO-DRIVE RH LARGE
12	4	021956	021956	BOLT SS HH 5/8-11 X 2 3/4 17-4PH H1025 155KSI TENSILE
13	4	005480	005480	NUT HEX SS 5/8-11
14	1	1098970	1098970	ARM GROUND 10" SS T304
15	4	430191	430191.35	ARM ASSY 10 IN DBL SC METRIC WELD-ON BRACKETS
16	8	430191	430191.34	ARM ASSY 10 IN SNGL SC METRIC WELD-ON BRACKETS
17	2	428515-6	428515.6	SPRG ASSY ALC 97 WHITE
18	2	428515-4	428515.4	SPRG ASSY ALC 95 RED
19	1	427295-5	--	SUPPORT COLUMN "SANI-T" STYLE 6" TO 6" ALC SS W/O BASE PLATE W=19-3/8" A=16" B=9-13/16" C=15"
20	1	427295-5	--	SUPPORT COLUMN "SANI-T" STYLE 6" TO 6" ALC SS W/O BASE PLATE W=19-3/8" A=19-1/8" B=12-15/16" C=15"
21	1	424967.2	--	PEDESTAL FOOT, 6 1/2 SQ, "A" = 7-7/8"
22	1	424967.2	--	PEDESTAL FOOT, 6 1/2 SQ, "A" = 6-5/8"
23	4	406900	010614	WEIGHT KEY #14 [NOT SHOWN]
24	48	--	204550.310	NUT ACORN SS M10-1.5 [NOT SHOWN]
25	1	--	1043122	MOT 1HP 1500 TENV 200/400/50/3 143TC SS INV DUTY WSHDWN
26	1	--	1050174	LUBRICANT GEAR OIL FOOD GRADE [1 QT] [NOT SHOWN]
27	1	425475	425475.12	DR ASSY LARGE 745-965 RPM LESS MOTOR 855 MID-RNG "A" SER [NOT SHOWN]

CUSTOMER DRAWINGS: SH01-006286, 415188, 425475 SH 1-2

MANUFACTURING DRAWINGS:

D-SIZE: SH01-006286, SH01-006286B, SH01-006286F
 SH01-006286H1, SH01-006286H2, SH01-006286H3,
 SH01-006286H4, DPL001_642_G

B-SIZE:

SH01-006286B_001-003
 SH01-006286F_001-008
 SH01-006286H1_001-006
 SH01-006286H2_001-002
 SH01-006286H3_001-002
 SH01-006286H4_001-002
 1099910, 1099911, 42500SH 1, 424967 SH 1, 427295

GENERAL TOLERANCES UNLESS OTHERWISE SPECIFIED			DRAWING TO BE INTERPRETED PER ASME Y14.5		HANDLING
X: ±2 X.X: ±1.5 X.XX: ±1.00 X.XXX: ±0.250 ANGLES: ±1°			EQP CATEGORY: VIBRATORY	MASS: 673.69kg	UNITS: mm/kg
DESIGNER: MOpp	DATE: 2015-08-04	STATUS: RELEASED	ITEM NUMBER: I-F COLLECTION SHAKER 457 [18"] W X 3683 [145"] L		REV
DRAFTER: L&T	DATE: 2015-08-27	ITEM NUMBER: SH01-006286		REF MOOD: -SH01-005316	D
MODIFIED: DMINTEER	DATE: 2015-10-13	ITEM NUMBER: SH01-006286		REF MOOD: -SH01-005316	
MFG ENG: ---	DATE: ---	ITEM NUMBER: SH01-006286		REF MOOD: -SH01-005316	
CHECKED: DMINTEER	DATE: 2015-10-13	ITEM NUMBER: SH01-006286		REF MOOD: -SH01-005316	
DOC CTRL: ---	DATE: ---	ITEM NUMBER: SH01-006286		REF MOOD: -SH01-005316	
APPROVED: DMINTEER	DATE: 2015-10-13	ITEM NUMBER: SH01-006286		REF MOOD: -SH01-005316	
This drawing, including the principles of design, is submitted with the agreement that it is not to be reproduced, copied or loaned in part or whole. It is not to be used in any manner that may constitute a detriment directly or indirectly to Key Technology, Inc.					SCALE: 1:10 WHEN PRINTED FULL SCALE